

Fig. S1

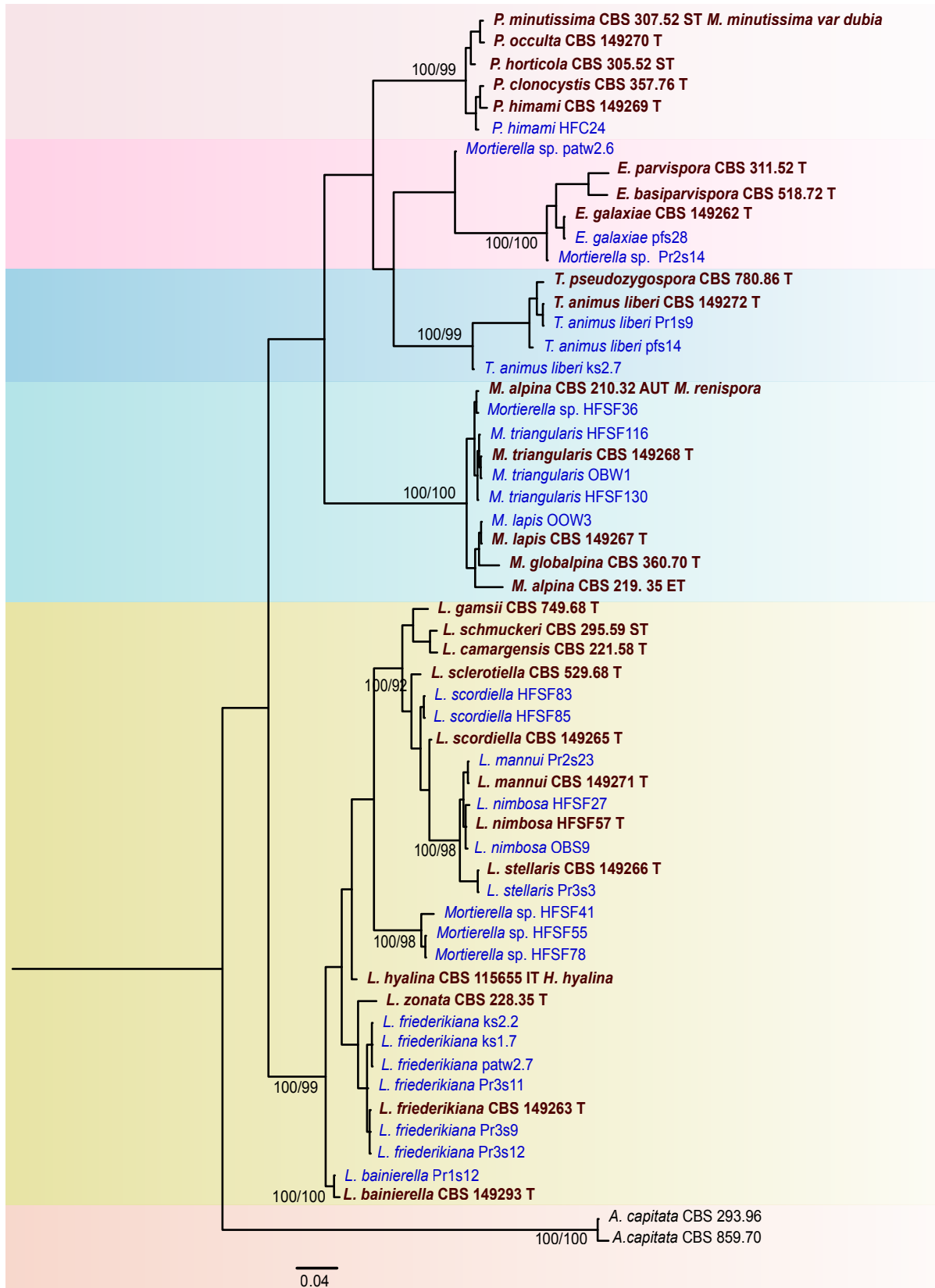


Fig. S1. Maximum Likelihood phylogram (log likelihood -7961.52) of our isolated *Mortierellaceae* species based on the concatenation of the rDNA-ITS and LSU region. Our isolates were grouped into 5 genera: the colour-indicated lineages representing the genera *Podila*, *Entomortierella*, the new genus *Tyroliella*, *Mortierella* and *Linnemannia*. Branch support values  $\geq 70$  (Bayesian Posterior Probabilities / Parsimony Bootstrap support) are shown above the respective branches. Sequences generated from typus are highlighted in red.

**Table S1**

**Table S1.** Information on the *Mortierellaceae* strains used in this study including GenBank accession numbers, CBS numbers, JMRC numbers, IBF herbarium numbers and data concerning the isolation of the respective strain. ITS sequences with 100 % sequence identity were submitted to GenBank only for 2–3 representative strains for each species, respectively (100 % identity).

No	me	UBK culture collection		Je microbial resource collection										Date of isolation
		isolate_ID	GenBank ITS	GenBank LSU	GenBank_RPB1	CBS number	Type specimen	(JMRC number)	Country	Locality	Habitat	Substrate		
1	<i>Entomortierella galaxiae</i>	M22	MT380895	MZ981751	ON677246	CBS 149262	Holotype M22	SF015106	Austria	Haggen	<i>Pinus cembra</i>	Soil	6/5/2019	
2	<i>Entomortierella galaxiae</i>	Pfs28	MW042209						Austria	Finkenbergr, Pfitscherjoch	<i>Salix herbaceae</i>	Soil	8/8/2019	
3	<i>Entomortierella galaxiae</i>	Patw1_1	100 % identical						Austria	Innsbruck, Patscherkofel	<i>Pinus cembra</i>	Soil	6/5/2019	
4	<i>Entomortierella galaxiae</i>	Patw2_6	MW042205						Austria	Innsbruck, Patscherkofel	<i>Pinus cembra</i>	Soil	6/5/2019	
5	<i>Entomortierella galaxiae</i>	Ks3_11	100 % identical						Austria	Kühtai	<i>Pinus cembra</i>	Soil	6/5/2019	
6	<i>Entomortierella galaxiae</i>	Kw1_12	100 % identical						Austria	Kühtai	<i>Pinus cembra</i>	Soil	6/5/2019	
7	<i>Entomortierella galaxiae</i>	Kw2_8	100 % identical						Austria	Kühtai	<i>Pinus cembra</i>	Soil	6/5/2019	
8	<i>Entomortierella galaxiae</i>	Kw3_13	100 % identical						Austria	Kühtai	<i>Pinus cembra</i>	Soil	6/5/2019	
9	<i>Entomortierella galaxiae</i>	Kw3_14	100 % identical						Austria	Kühtai	<i>Pinus cembra</i>	Soil	6/5/2019	
10	<i>Entomortierella galaxiae</i>	Kw3_15	100 % identical						Austria	Kühtai	<i>Pinus cembra</i>	Soil	6/5/2019	
11	<i>Entomortierella galaxiae</i>	Kw3_5	100 % identical						Austria	Kühtai	<i>Pinus cembra</i>	Soil	6/5/2019	
12	<i>Entomortierella galaxiae</i>	M1	100 % identical						Austria	Kühtai	<i>Pinus cembra</i>	Soil	6/5/2019	
13	<i>Entomortierella galaxiae</i>	M25	100 % identical						Austria	Praxmar	<i>Pinus cembra</i>	Soil	6/5/2019	
14	<i>Entomortierella galaxiae</i>	M5	100 % identical						Austria	Praxmar	<i>Pinus cembra</i>	Soil	6/5/2019	
15	<i>Entomortierella galaxiae</i>	Pr1s18	MW042208						Austria	Praxmar	<i>Pinus cembra</i>	Soil	6/5/2019	
16	<i>Entomortierella galaxiae</i>	Pr2s13	100 % identical						Austria	Praxmar	<i>Pinus cembra</i>	Soil	6/5/2019	
17	<i>Entomortierella galaxiae</i>	Pr2s14	MW042206						Austria	Praxmar	<i>Pinus cembra</i>	Soil	6/5/2019	
18	<i>Entomortierella galaxiae</i>	Pr2s20	100 % identical						Austria	Praxmar	<i>Pinus cembra</i>	Soil	6/5/2019	
19	<i>Entomortierella galaxiae</i>	Pr2s21	100 % identical						Austria	Praxmar	<i>Pinus cembra</i>	Soil	6/5/2019	
20	<i>Entomortierella galaxiae</i>	Prw1_1	100 % identical						Austria	Praxmar	<i>Pinus cembra</i>	Soil	6/5/2019	
21	<i>Entomortierella galaxiae</i>	Prw3_3	100 % identical						Austria	Praxmar	<i>Pinus cembra</i>	Soil	6/5/2019	
22	<i>Linnemannia bainierella</i>	Pr1s21	MT380864	MZ981756	ON611699	CBS 149293	Holotype Pr1s21	SF015105	Austria	Praxmar	<i>Pinus cembra</i>	Soil	6/5/2019	
23	<i>Linnemannia bainierella</i>	Pr1s12	MT380861					SF015104	Austria	Praxmar	<i>Pinus cembra</i>	Soil	6/5/2019	
24	<i>Linnemannia bainierella</i>	Pr1s13	100 % identical						Austria	Praxmar	<i>Pinus cembra</i>	Soil	6/5/2019	
25	<i>Linnemannia bainierella</i>	Pr1s20	100 % identical						Austria	Praxmar	<i>Pinus cembra</i>	Soil	6/5/2019	
26	<i>Linnemannia frederikiana</i>	Pr3s8	MW419933	MZ981755	ON677241	CBS 149263	Holotype Pr3s8	SF015090	Austria	Praxmar	<i>Pinus cembra</i>	Soil	6/5/2019	
27	<i>Linnemannia frederikiana</i>	Ks2_11	100 % identical						Austria	Kühtai	<i>Pinus cembra</i>	Soil	6/5/2019	
28	<i>Linnemannia frederikiana</i>	Ks2_12	100 % identical						Austria	Kühtai	<i>Pinus cembra</i>	Soil	6/5/2019	
29	<i>Linnemannia frederikiana</i>	Ks2_2	MW042223						Austria	Kühtai	<i>Pinus cembra</i>	Soil	6/5/2019	

Table S1 (Continued).

No	me	UIBK culture collection		Je microbial resource collection (JMRC number)				Country	Locality	Habitat	Substrate	Date of isolation
		isolate_ID	GenBank ITS	GenBank LSU	GenBank_RPB1	CBS number	Type specimen					
30	<i>Linnemannia frederikiana</i>	Patw2_7	MW042224	MZ981754	OP503723		SF015088	Austria	Innsbruck, Patscherkofel	<i>Pinus cembra</i>	Soil	6/5/2019
31	<i>Linnemannia frederikiana</i>	Patw2_9	100 % identical					Austria	Innsbruck, Patscherkofel	<i>Pinus cembra</i>	Soil	6/5/2019
32	<i>Linnemannia frederikiana</i>	Patw4_3	MT308726					Austria	Innsbruck, Patscherkofel	<i>Pinus cembra</i>	Soil	6/5/2019
33	<i>Linnemannia frederikiana</i>	Pr3s11	MW042222					Austria	Praxmar	<i>Pinus cembra</i>	Soil	6/5/2019
34	<i>Linnemannia frederikiana</i>	Pr3s12	MW419934					Austria	Praxmar	<i>Pinus cembra</i>	Soil	6/5/2019
35	<i>Linnemannia frederikiana</i>	Ks1_7	MW042225	MZ981753	OP503722			Austria	Kühtai	<i>Pinus cembra</i>	Soil	6/5/2019
36	<i>Linnemannia frederikiana</i>	Pr3s9	MW419932					Austria	Praxmar	<i>Pinus cembra</i>	Soil	6/5/2019
37	<i>Linnemannia frederikiana</i>	Pr4s3	MT308725					Austria	Praxmar	<i>Pinus cembra</i>	Soil	6/5/2019
38	<i>Linnemannia mannii</i>	Pr2s5	MW042230	MZ981765	ON677245	CBS 149271	SF015094	Austria	Praxmar	<i>Pinus cembra</i>	Soil	6/5/2019
39	<i>Linnemannia mannii</i>	Pr2s23	MW042231					Austria	Praxmar	<i>Pinus cembra</i>	Soil	6/5/2019
40	<i>Linnemannia nimbosea</i>	HFSF57	MW042228	MZ981762	ON677243	CBS 149264	SF015092	Austria	Innsbruck, Hafelekar	<b>Salix herbaceae</b>	Soil	6/5/2019
41	<i>Linnemannia nimbosea</i>	HFSF27	MW042226	MZ981761	OP503718			Austria	Innsbruck, Hafelekar	<i>Salix herbaceae</i>	Soil	6/5/2019
42	<i>Linnemannia nimbosea</i>	OBS12	100 % identical					Austria	Obergurgl, Rotmoos	Bare soil	Soil	6/16/2019
43	<i>Linnemannia nimbosea</i>	OBS13	100 % identical					Austria	Obergurgl, Rotmoos	Bare soil	Soil	6/16/2019
44	<i>Linnemannia nimbosea</i>	OBS9	MW042229					Austria	Obergurgl, Rotmoos	Bare soil	Soil	6/16/2019
45	<i>Linnemannia nimbosea</i>	OBW5	100 % identical					Austria	Obergurgl, Rotmoos	Bare soil	Soil	6/16/2019
46	<i>Linnemannia nimbosea</i>	OBW6	100 % identical					Austria	Obergurgl, Rotmoos	Bare soil	Soil	6/16/2019
47	<i>Linnemannia scordiella</i>	HFSF81	MW042238	MZ981760	MZ779209	CBS 149265	SF015087	Austria	Innsbruck, Hafelekar	<b>Salix herbaceae</b>	Soil	6/5/2019
48	<i>Linnemannia scordiella</i>	HFSF83	MW042239					Austria	Innsbruck, Hafelekar	<i>Salix herbaceae</i>	Soil	6/5/2019
49	<i>Linnemannia scordiella</i>	HFSF85	MW042240					Austria	Innsbruck, Hafelekar	<i>Salix herbaceae</i>	Soil	6/5/2019

Table S1 (Continued).

No	me	UIBK culture collection				Je microbial resource collection			Country	Locality	Habitat	Substrate	Date of isolation
		isolate_ID	GenBank_ITS	GenBank_LSU	GenBank_RPB1	CBS number	Type specimen	(JMIRC number)					
50	<i>Linnemannia solitaria</i>	OAS3	MT279272	MT279275		CBS 149273	Holotype OAS3	SF013920	Austria	Obergurgl, Rotmoos glacier forefront	Bare soil	Soil	6/16/2019
51	<i>Linnemannia solitaria</i>	OAS4	MT279273						Austria	Obergurgl, Rotmoos glacier forefront	Bare soil	Soil	6/16/2019
52	<i>Linnemannia solitaria</i>	OAS5	MT279274	MT279276					Austria	Obergurgl, Rotmoos glacier forefront	Bare soil	Soil	6/16/2019
53	<i>Linnemannia stellaris</i>	Ks2_4	MW042232	MZ981764	ON677244	CBS 149266	Holotype Ks2_4	SF015089	Austria	Kühtai	<i>Pinus cembra</i>	Soil	6/5/2019
54	<i>Linnemannia stellaris</i>	K45	100 % identical						Austria	Kühtai	<i>Pinus cembra</i>	Soil	6/5/2019
55	<i>Linnemannia stellaris</i>	Ks2_10	100 % identical						Austria	Kühtai	<i>Pinus cembra</i>	Soil	6/5/2019
56	<i>Linnemannia stellaris</i>	Ks2_3	100 % identical						Austria	Kühtai	<i>Pinus cembra</i>	Soil	6/5/2019
57	<i>Linnemannia stellaris</i>	K36	100 % identical						Austria	Kühtai	<i>Pinus cembra</i>	Soil	6/5/2019
58	<i>Linnemannia stellaris</i>	Ks2_5	100 % identical						Austria	Kühtai	<i>Pinus cembra</i>	Soil	6/5/2019
59	<i>Linnemannia stellaris</i>	Ks2_6	100 % identical						Austria	Kühtai	<i>Pinus cembra</i>	Soil	6/5/2019
60	<i>Linnemannia stellaris</i>	Ks2_9	100 % identical						Austria	Kühtai	<i>Pinus cembra</i>	Soil	6/5/2019
61	<i>Linnemannia stellaris</i>	Ks3_5	100 % identical						Austria	Kühtai	<i>Pinus cembra</i>	Soil	6/5/2019
62	<i>Linnemannia stellaris</i>	Ks3_6	100 % identical						Austria	Kühtai	<i>Pinus cembra</i>	Soil	6/5/2019
63	<i>Linnemannia stellaris</i>	Ks3_8	100 % identical						Austria	Kühtai	<i>Pinus cembra</i>	Soil	6/5/2019
64	<i>Linnemannia stellaris</i>	Kw1_11	100 % identical						Austria	Kühtai	<i>Pinus cembra</i>	Soil	6/5/2019
65	<i>Linnemannia stellaris</i>	Kw1_6	100 % identical						Austria	Kühtai	<i>Pinus cembra</i>	Soil	6/5/2019
66	<i>Linnemannia stellaris</i>	Kw3_10	100 % identical						Austria	Kühtai	<i>Pinus cembra</i>	Soil	6/5/2019
67	<i>Linnemannia stellaris</i>	Pats1_1	100 % identical						Austria	Innsbruck, Patscherkofel	<i>Pinus cembra</i>	Soil	6/5/2019
68	<i>Linnemannia stellaris</i>	Pats1_2	100 % identical						Austria	Innsbruck, Patscherkofel	<i>Pinus cembra</i>	Soil	6/5/2019
69	<i>Linnemannia stellaris</i>	Pats2_6	100 % identical						Austria	Innsbruck, Patscherkofel	<i>Pinus cembra</i>	Soil	6/5/2019
70	<i>Linnemannia stellaris</i>	Pats3_10	100 % identical						Austria	Innsbruck, Patscherkofel	<i>Pinus cembra</i>	Soil	6/5/2019
71	<i>Linnemannia stellaris</i>	Pats3_5	100 % identical						Austria	Innsbruck, Patscherkofel	<i>Pinus cembra</i>	Soil	6/5/2019
72	<i>Linnemannia stellaris</i>	Pats3_6	MW042234						Austria	Innsbruck, Patscherkofel	<i>Pinus cembra</i>	Soil	6/5/2019
73	<i>Linnemannia stellaris</i>	Pats3_8	100 % identical						Austria	Innsbruck, Patscherkofel	<i>Pinus cembra</i>	Soil	6/5/2019

Table S1 (Continued).

No	me	UIBK culture collection		Je microbial resource collection (JMRC number)				Date of isolation				
		isolate_ID	GenBank_ITS	GenBank_LSU	GenBank_RPB1	CBS number	Type specimen		JMRC number			
74	<i>Linnemannia stellaris</i>	Pats3_9	100 % identical					Austria	Innsbruck, Patscherkofel	<i>Pinus cembra</i>	Soil	6/5/2019
75	<i>Linnemannia stellaris</i>	pats4_2	100 % identical					Austria	Innsbruck, Patscherkofel	<i>Pinus cembra</i>	Soil	6/5/2019
76	<i>Linnemannia stellaris</i>	Patw2_5	100 % identical					Austria	Innsbruck, Patscherkofel	<i>Pinus cembra</i>	Soil	6/5/2019
77	<i>Linnemannia stellaris</i>	Pr10	100 % identical					Austria	Praxmar	<i>Pinus cembra</i>	Soil	6/5/2019
78	<i>Linnemannia stellaris</i>	Pr14	100 % identical					Austria	Praxmar	<i>Pinus cembra</i>	Soil	6/5/2019
79	<i>Linnemannia stellaris</i>	Pr3s14	100 % identical					Austria	Praxmar	<i>Pinus cembra</i>	Soil	6/5/2019
80	<i>Linnemannia stellaris</i>	Pr3s3	<b>MW042233</b>					Austria	Praxmar	<i>Pinus cembra</i>	Soil	6/5/2019
81	<i>Linnemannia stellaris</i>	Pr3s6	100 % identical					Austria	Praxmar	<i>Pinus cembra</i>	Soil	6/5/2019
82	<i>Linnemannia stellaris</i>	Pr5	100 % identical					Austria	Praxmar	<i>Pinus cembra</i>	Soil	6/5/2019
83	<i>Mortierella lapis</i>	OBS3	MT380877	MZ981747	ON677248	CBS 149267	Holotype OBS3	SF015098	<b>Obergurghl, Rotmoos glacier forefront</b>	<b>Bare soil</b>	<b>Soil</b>	<b>6/16/2019</b>
84	<i>Mortierella lapis</i>	OAS7	100 % identical					Austria	Obergurghl, Rotmoos glacier forefront	Bare soil	Soil	6/16/2019
85	<i>Mortierella lapis</i>	OAS9	100 % identical					Austria	Obergurghl, Rotmoos glacier forefront	Bare soil	Soil	6/16/2019
86	<i>Mortierella lapis</i>	OAW11	100 % identical					Austria	Obergurghl, Rotmoos glacier forefront	Bare soil	Soil	6/16/2019
87	<i>Mortierella lapis</i>	OAW4	100 % identical					Austria	Obergurghl, Rotmoos glacier forefront	Bare soil	Soil	6/16/2019
88	<i>Mortierella lapis</i>	OAW6	100 % identical					Austria	Obergurghl, Rotmoos glacier forefront	Bare soil	Soil	6/16/2019
89	<i>Mortierella lapis</i>	OAW8	100 % identical					Austria	Obergurghl, Rotmoos glacier forefront	Bare soil	Soil	6/16/2019
90	<i>Mortierella lapis</i>	OAW9	100 % identical					Austria	Obergurghl, Rotmoos glacier forefront	Bare soil	Soil	6/16/2019
91	<i>Mortierella lapis</i>	OBS1	100 % identical					Austria	Obergurghl, Rotmoos glacier forefront	Bare soil	Soil	6/16/2019

Table S1 (Continued).

No	me	UIBK culture collection				Je microbial resource collection				Date of isolation			
		isolate_ID	GenBank_ITS	GenBank_LSU	GenBank_RPB1	CBS number	Type specimen	(JMRC number)	Country		Locality	Habitat	Substrate
92	<i>Mortierella lapis</i>	OAS6	100 % identical						Austria	Obergurgl, Rotmoos glacier forefront	Bare soil	Soil	6/16/2019
93	<i>Mortierella lapis</i>	OBW7	100 % identical						Austria	Obergurgl, Rotmoos glacier forefront	Bare soil	Soil	6/16/2019
94	<i>Mortierella lapis</i>	OOW2	100 % identical						Austria	Obergurgl, Rotmoos glacier forefront	Bare soil	Soil	6/16/2019
95	<i>Mortierella lapis</i>	OOW3	MT380876	MZ981746	OP503727				Austria	Obergurgl, Rotmoos glacier forefront	Bare soil	Soil	6/16/2019
96	<i>Mortierella triangularis</i>	OAS8	MT380873	MZ981741	ON677242	CBS 149268	Holotype OAS8	SF015096	Austria	Obergurgl, Rotmoos glacier forefront	Bare soil	Soil	6/16/2019
97	<i>Mortierella triangularis</i>	HFSF130	MW042214		OP503725			SF015093	Austria	Innsbruck, Hafelekar	Salix herbaceae	Soil	6/5/2019
98	<i>Mortierella triangularis</i>	OAS10	100 % identical						Austria	Obergurgl, Rotmoos glacier forefront	Bare soil	Soil	6/16/2019
99	<i>Mortierella triangularis</i>	OAS11	100 % identical						Austria	Obergurgl, Rotmoos glacier forefront	Bare soil	Soil	6/16/2019
100	<i>Mortierella triangularis</i>	HFSF116	MW419931		OP503724			SF015097	Austria	Innsbruck, Hafelekar	Salix herbaceae	Soil	6/5/2019
101	<i>Mortierella triangularis</i>	OAW10	100 % identical						Austria	Obergurgl, Rotmoos glacier forefront	Bare soil	Soil	6/16/2019
102	<i>Mortierella triangularis</i>	OBW1	MT380875		OP503726			SF015095	Austria	Obergurgl, Rotmoos glacier forefront	Bare soil	Soil	6/16/2019
103	<i>Podilia himami</i>	HFSF11	MW042197	MZ981749	ON645347	CBS 149269	Holotype HFSF11	SF015086	Austria	Innsbruck, Hafelekar	Salix herbaceae	Soil	6/5/2019
104	<i>Podilia himami</i>	HFC24	MW042196	MZ981750	OP503717			SF015085	Austria	Innsbruck, Hafelekar	Salix herbaceae	Soil	6/5/2019
105	<i>Podilia himami</i>	HFSF46	100 % identical						Austria	Innsbruck, Hafelekar	Salix herbaceae	Soil	6/5/2019
106	<i>Podilia himami</i>	HFSF47	MW042198						Austria	Innsbruck, Hafelekar	Salix herbaceae	Soil	6/5/2019
107	<i>Podilia himami</i>	HFSF60	100 % identical						Austria	Innsbruck, Hafelekar	Salix herbaceae	Soil	6/5/2019

Table S1. (Continued).

Table S1 (Continued).

No	me	UIBK culture collection		Je microbial resource collection (JMRC number)				Country	Locality	Habitat	Substrate	Date of isolation	
		isolate_ID	GenBank ITS	GenBank LSU	GenBank_RPB1	CBS number	Type specimen						JMRC number
108	<i>Podilia occulta</i>	HFSF34	MW042216	MZ981748	ON645348	CBS 149270	Holotype HFSF34	SF015103	Austria	Innsbruck, Hafelekar	Salix herbaceae	Soil	6/5/2019
109	<i>Podilia occulta</i>	HFSF52	MW042191						Austria	Innsbruck, Hafelekar	Salix herbaceae	Soil	6/5/2019
110	<i>Tyrollella animus liberi</i>	Pfs24	MW042203	MZ981752	ON677247	CBS 149272	Holotype Pfs24	SF015196	Austria	Finkenbergl, Pfitscherjoch	Salix herbaceae	Soil	8/8/2019
111	<i>Tyrollella animus liberi</i>	HFC22	100 % identical						Austria	Innsbruck, Hafelekar	Salix herbaceae	Soil	6/5/2019
112	<i>Tyrollella animus liberi</i>	HFC23	MW042202		OP503730			SF015091	Austria	Innsbruck, Hafelekar	Salix herbaceae	Soil	6/5/2019
113	<i>Tyrollella animus liberi</i>	HFC8	100 % identical						Austria	Innsbruck, Hafelekar	Salix herbaceae	Soil	6/5/2019
114	<i>Tyrollella animus liberi</i>	K23	100 % identical						Austria	Kühtai	Pinus cembra	Soil	6/5/2019
115	<i>Tyrollella animus liberi</i>	Ks1_10	100 % identical						Austria	Kühtai	Pinus cembra	Soil	6/5/2019
116	<i>Tyrollella animus liberi</i>	Ks1_16	100 % identical						Austria	Kühtai	Pinus cembra	Soil	6/5/2019
117	<i>Tyrollella animus liberi</i>	Ks2_7	MW042199						Austria	Kühtai	Pinus cembra	Soil	6/5/2019
118	<i>Tyrollella animus liberi</i>	Ks2_8	100 % identical						Austria	Kühtai	Pinus cembra	Soil	6/5/2019
119	<i>Tyrollella animus liberi</i>	Ks3_13	MW042201					SF015099	Austria	Kühtai	Pinus cembra	Soil	6/5/2019
120	<i>Tyrollella animus liberi</i>	Ks3_7	100 % identical						Austria	Kühtai	Pinus cembra	Soil	6/5/2019
121	<i>Tyrollella animus liberi</i>	Kw1_2	100 % identical						Austria	Kühtai	Pinus cembra	Soil	6/5/2019
122	<i>Tyrollella animus liberi</i>	Pfs11	100 % identical						Austria	Finkenbergl, Pfitscherjoch	Salix herbaceae	Soil	8/8/2019
123	<i>Tyrollella animus liberi</i>	Pfs13	100 % identical						Austria	Finkenbergl, Pfitscherjoch	Salix herbaceae	Soil	8/8/2019
124	<i>Tyrollella animus liberi</i>	Pfs14	MW042200						Austria	Finkenbergl, Pfitscherjoch	Salix herbaceae	Soil	8/8/2019
125	<i>Tyrollella animus liberi</i>	Pfs15	100 % identical						Austria	Finkenbergl, Pfitscherjoch	Salix herbaceae	Soil	8/8/2019
126	<i>Tyrollella animus liberi</i>	Pfs18	100 % identical						Austria	Finkenbergl, Pfitscherjoch	Salix herbaceae	Soil	8/8/2019
127	<i>Tyrollella animus liberi</i>	HFC20	100 % identical						Austria	Innsbruck, Hafelekar	Salix herbaceae	Soil	6/5/2019
128	<i>Tyrollella animus liberi</i>	Pfs5	100 % identical						Austria	Finkenbergl, Pfitscherjoch	Salix herbaceae	Soil	8/8/2019
129	<i>Tyrollella animus liberi</i>	Pfs7	100 % identical						Austria	Finkenbergl, Pfitscherjoch	Salix herbaceae	Soil	8/8/2019
130	<i>Tyrollella animus liberi</i>	Pfw1	100 % identical						Austria	Finkenbergl, Pfitscherjoch	Salix herbaceae	Soil	8/8/2019

Table S1 (Continued).

No	me	UIBK culture collection			Je microbial resource collection (JMRC number)			Date of isolation				
		isolate_ID	GenBank_ITS	GenBank_LSU	GenBank_RPB1	CBS number	Type specimen		Country	Locality	Habitat	Substrate
131	<i>Tyrollella animus liberi</i>	Pfw2	100 % identical					Austria	Finkenbergr, Pflischerjoch	Salix herbaceae	Soil	8/8/2019
132	<i>Tyrollella animus liberi</i>	Pfw3	100 % identical					Austria	Finkenbergr, Pflischerjoch	Salix herbaceae	Soil	8/8/2019
133	<i>Tyrollella animus liberi</i>	Pfw7	100 % identical					Austria	Finkenbergr, Pflischerjoch	Salix herbaceae	Soil	8/8/2019
134	<i>Tyrollella animus liberi</i>	Pr1s1	100 % identical					Austria	Praxmar	<i>Pinus cembra</i>	Soil	6/5/2019
135	<i>Tyrollella animus liberi</i>	Pr1s10	100 % identical					Austria	Praxmar	<i>Pinus cembra</i>	Soil	6/5/2019
136	<i>Tyrollella animus liberi</i>	Pr1s11	100 % identical					Austria	Praxmar	<i>Pinus cembra</i>	Soil	6/5/2019
137	<i>Tyrollella animus liberi</i>	Pr1s15	100 % identical					Austria	Praxmar	<i>Pinus cembra</i>	Soil	6/5/2019
138	<i>Tyrollella animus liberi</i>	Pr1s4	100 % identical					Austria	Praxmar	<i>Pinus cembra</i>	Soil	6/5/2019
139	<i>Tyrollella animus liberi</i>	Pr1s5	100 % identical					Austria	Praxmar	<i>Pinus cembra</i>	Soil	6/5/2019
140	<i>Tyrollella animus liberi</i>	Pr1s8	100 % identical					Austria	Praxmar	<i>Pinus cembra</i>	Soil	6/5/2019
141	<i>Tyrollella animus liberi</i>	Pr1s9	<b>MT380851</b>					Austria	Praxmar	<i>Pinus cembra</i>	Soil	6/5/2019
142	<i>Tyrollella</i> sp.	KS3_13	<b>MW042201</b>				<b>OP503729</b>	Austria	Kühtai	<i>Pinus cembra</i>	Soil	6/5/2019
143	<i>Tyrollella</i> sp.	KS2_7	<b>MW042199</b>					Austria	Kühtai	<i>Pinus cembra</i>	Soil	6/5/2019
144	<i>Tyrollella</i> sp.	Pfs14	<b>MW042200</b>					Austria	Kühtai	<i>Pinus cembra</i>	Soil	6/5/2019
								Austria	Finkenbergr, Pflischerjoch	Salix herbaceae	Soil	8/8/2019